


- Die cast Aluminium Base.
- Impact modified Polycarbonate Diffuser.
- UV Stabilized.
- Silicone Gasket.
- 2 x 20mm conduit entry points.
- Available with an Opal, Clear Prismatic and high performance Lumaax™ Diffuser.
- Hinged Gear Tray for easy maintenance.



276 / 97 mm

 TP(a) Diffuser

Performance Capabilities

The Isis/ Lumaax, when using a 500 mA Tridonic Driver and Led Board, achieves **1255 lm**. Photometry results and LDT files are available upon request.



White | Lumaax™



White | Opal



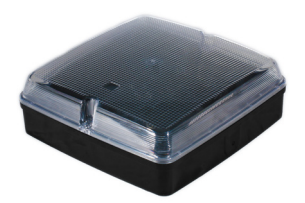
White | Clear



Black | Lumaax™



Black | Opal



Black | Clear

IP54

Lumaax™

Product	Part Code
Isis Cast White Lumaax™	PHV002G
Isis Cast Black Lumaax™	PHV002F