

- Impact modified Polycarbonate Base and Diffuser.
- UV Stabilized.
- Silicone Gasket.
- 2 x 20mm conduit entry points.
- Available with an Opal, Clear Prismatic and high performance Lumaax™ Diffuser.
- Hinged Gear Tray for easy maintenance.
- Now available with Sterilelux™ antimicrobial technology.



276 / 97 mm

 TP(a) Diffuser  TP(a) Base

**Sterilelux**™

### Performance Capabilities

The Isis/ Lumaax, when using a 500 mA Tridonic Driver and Led Board, achieves **1255 lm**. Photometry results and LDT files are available upon request.



White | Lumaax™



White | Opal



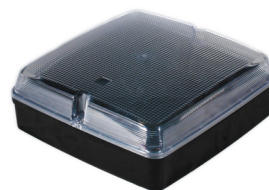
White | Clear



Black | Lumaax™



Black | Opal



Black | Clear

IP54

**Lumaax**™

**MADE IN BRITAIN**

Product	Part Code
Isis White   Lumaax™	PHV004H
Isis Black   Lumaax™	PHV004G